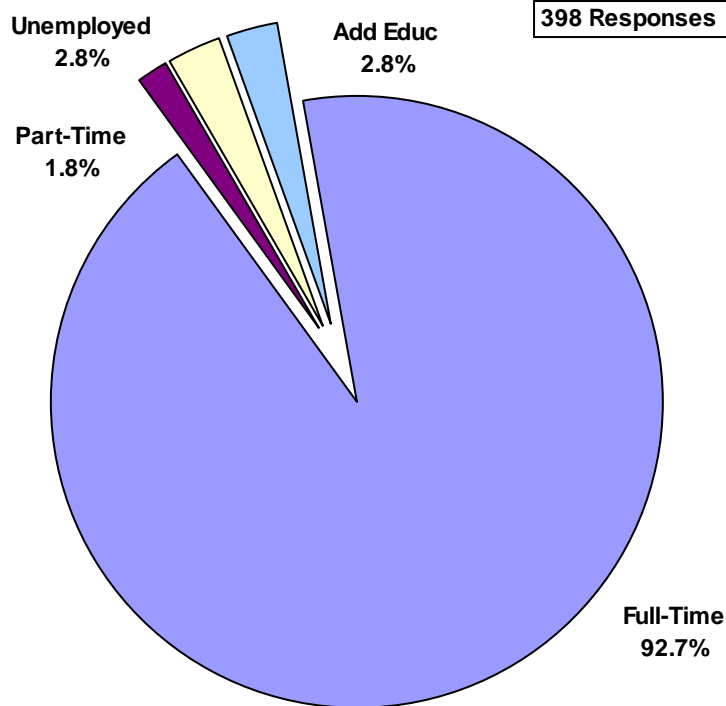


POST-GRADUATION ACTIVITIES GRADUATE SCHOOL CLASS OF 2010

The Career Services Office conducts an annual follow-up survey of The University of Scranton graduates to determine the post-graduation status of this population. This four-page publication serves as an executive summary of the survey findings. Actual placements with employers and graduate or professional schools can be identified in a full report available in the Career Services Office.

Post Graduation Activities



HIGHLIGHTS OF THE 2010 REPORT

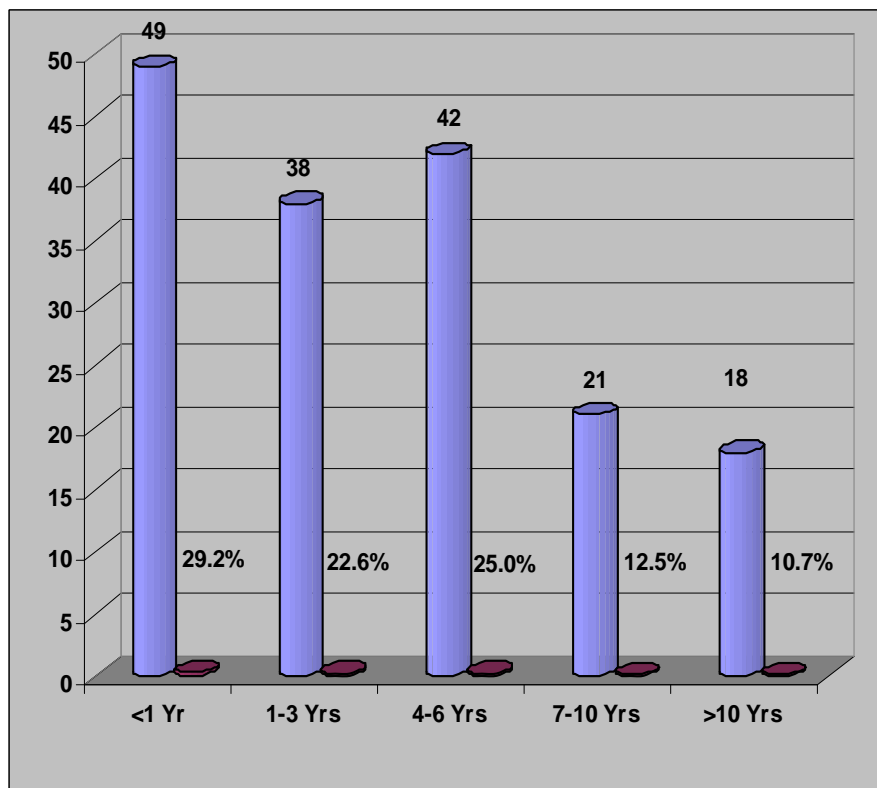
- 636 students completed graduate degree requirements in 2010; 678 finished degrees in 2009.
- 62.6% (N=398) of the Class of 2010 provided placement information.
- 97.2% of the respondents were either employed or pursuing additional education full-time.
- 92.7% of the respondents were employed full-time
- The average salary reported for 2010 graduates was \$55,862. (224 salaries reported)
- 70% of the graduates employed full-time were working in Pennsylvania, New Jersey, and New York.
- 2.8% (N= 7) of the respondents were pursuing additional education full-time.
- The unemployment rate for the Class of 2010 was 2.8%.

Length of Time in Present Job

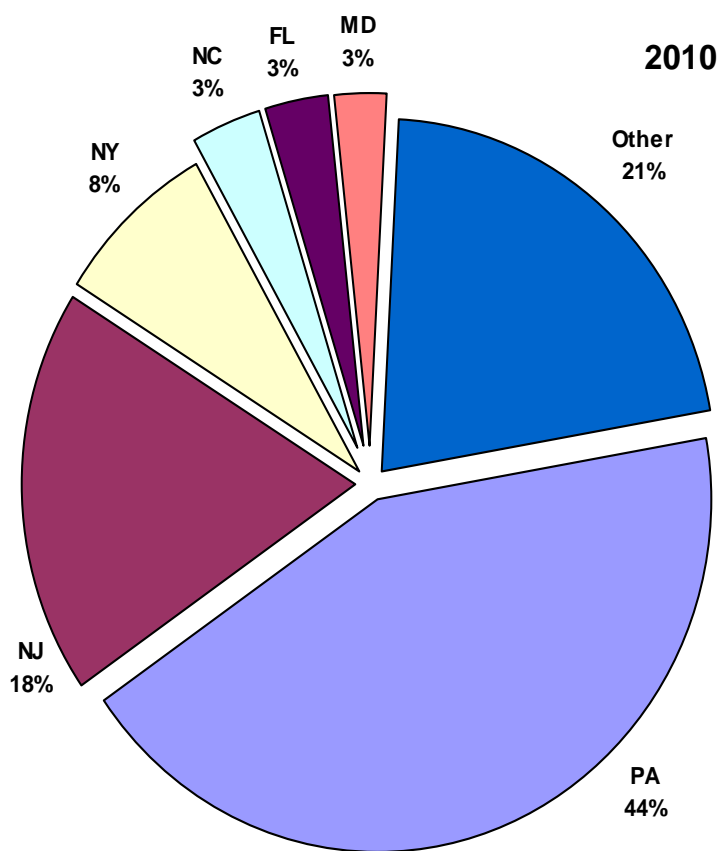
Approximately 29.2% of the graduates employed full-time (that provided information) indicated they were working in their job for less than 1 year. Of these graduates, 26.5% of these graduates completed the Educational Administration or Curriculum and Instruction program; 18.4% were Physical or Occupational Therapists.

A significant increase continues to be seen in those reporting employment with more years of experience as a result of the new online degree programs offered in the Education area.

Length of Time in Present Job



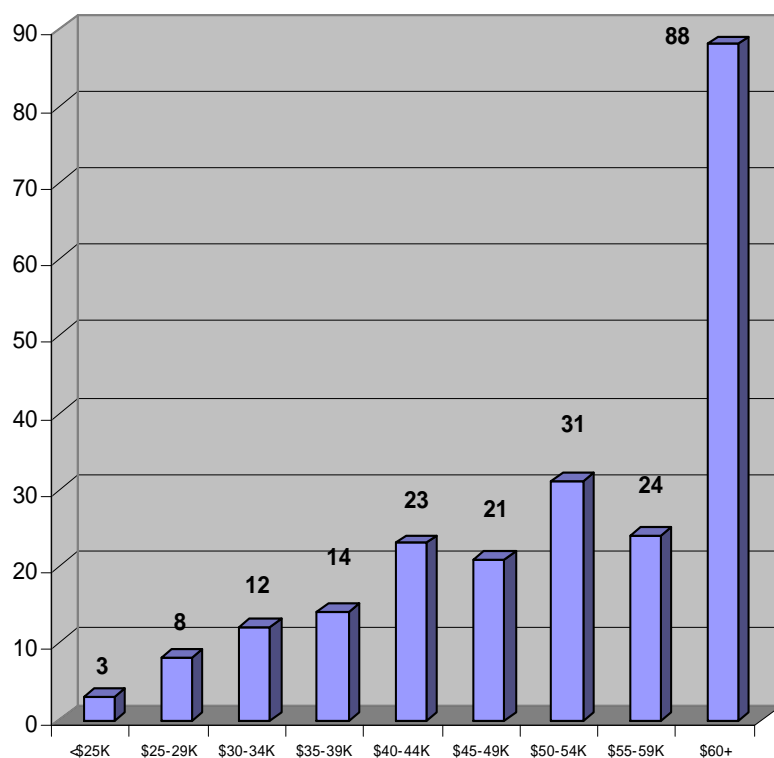
Geographical Placements by State



85 Graduates employed in Northeastern PA

Salary Information

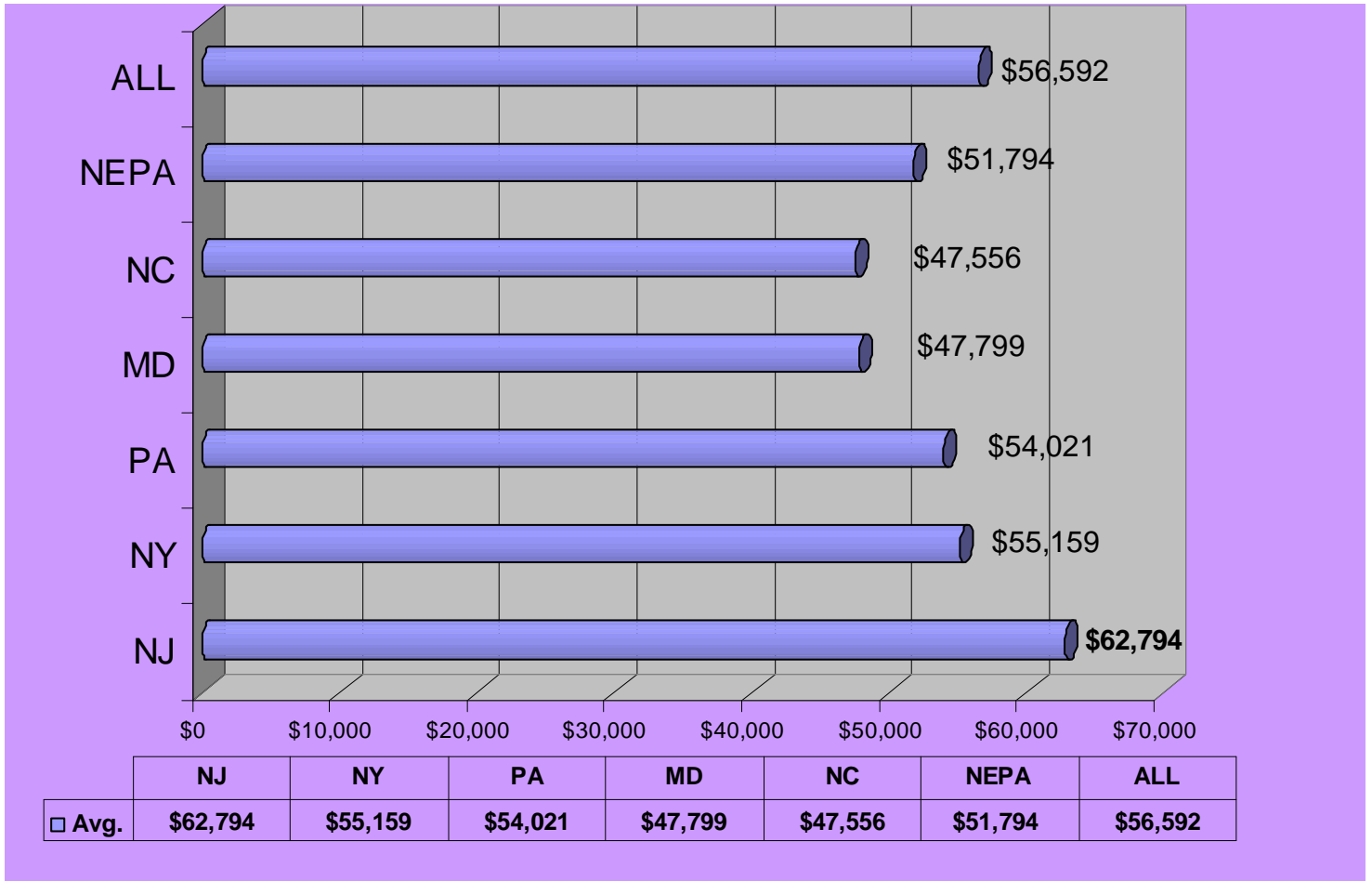
Approximately 61% of the graduates employed full-time provided salary information. The average salary for 2010 graduates was \$56,592. The graph below indicates the number of salaries reported by 5K ranges.



Average Salaries by Program - Class of 2010

MAJOR	Avg.	#	MAJOR	Avg.	#
Accounting	\$42,883	6	History	\$25,500	2
Adult Health Nursing	\$63,667	3	Human Resource Administration	\$74,900	1
Biochemistry	\$60,221	5	International Business	\$70,000	1
Chemistry	\$42,000	1	Marketing	\$35,750	2
Community Counseling	\$36,333	3	Nurse Anesthesia	\$145,833	6
Curriculum & Instruction	\$50,512	67	Occupational Therapy	\$61,185	11
Early Childhood Education	\$26,000	1	Physical Therapy	\$67,361	17
Educational Administration	\$58,840	56	Reading Education	\$51,533	3
Elementary Education	\$51,000	1	Rehabilitation Counseling	\$35,800	5
Finance	\$48,793	3	School Counseling	\$40,049	8
General	\$49,125	4	Secondary Education	\$43,749	4
Health Administration	\$53,680	5	Software Engineering	\$68,000	2
Health Care Management	\$118,500	2	Special Education	\$46,500	2
			Theology	\$42,800	2

Average Salaries Reported by State



Post Graduation Status Trends (2000 - 2010)



The University of Scranton Graduate School Class of 2010 - Status By Program

MAJOR	# Grads	# Resp	% Resp	Post-Graduation			
				Add Educ	Full-Time	Part-Time	Unemployed
Accounting	9	7	78%	0	6	0	1
Adult Health Nursing	5	4	80%	0	4	0	0
Biochemistry	13	8	62%	1	6	0	1
Chemistry	3	3	100%	1	2	0	0
Clinical Chemistry	4	3	75%	1	2	0	0
Community Counseling	16	7	44%	2	4	1	0
Curriculum & Instruction	187	118	63%	1	110	2	5
Early Childhood Education	1	1	100%	0	1	0	0
Educational Administration	175	109	62%	0	106	2	1
Elementary Education	5	4	80%	1	2	0	1
English As Second Language	1	0	0%	0	0	0	0
Finance—MBA	8	3	38%	0	3	0	0
General MBA	11	6	55%	2	4	0	0
Health Administration	20	9	45%	1	8	0	0
Health Care Management	4	4	100%	0	4	0	0
History	5	3	60%	0	3	0	0
Human Resource Administration	12	4	33%	0	3	0	1
International Business—MBA	4	2	50%	0	2	0	0
Marketing—MBA	4	2	50%	0	2	0	0
Nurse Anesthesia	17	12	71%	0	12	0	0
Occupational Therapy	26	15	58%	0	15	0	0
Operations Management—MBA	2	0	0%	0	0	0	0
Physical Therapy	37	30	81%	0	29	1	0
Reading Education	5	4	80%	0	4	0	0
Rehabilitation Counseling	16	9	56%	1	8	0	0
School Counseling	25	15	60%	0	14	0	1
Secondary Education	11	8	73%	0	7	1	0
Software Engineering	3	2	67%	0	2	0	0
Special Education	4	3	75%	0	3	0	0
Theology	3	3	100%	0	3	0	0
Totals	636	398	63%	11	369	7	11
				3%	93%	2%	3%