



THE UNIVERSITY OF SCRANTON
INSTITUTIONAL RESEARCH OFFICE

Enrollment Report

October 2011

NOTE: All enrollment figures are as of October 1, 2011 and do not include all parts of term . A final enrollment report will be released with complete enrollment data at the end of the fall semester.

HEADCOUNTS - ALL FALL TERMS							
	<u>2007</u>	<u>2008</u>	<u>2009</u>	<u>2010</u>	<u>2011</u>	Difference from 10 to 11	
						Heads	Percent
CAS	1,827	1,852	1,845	1,855	1,802	-53	-2.9%
PCPS	1,212	1,184	1,241	1,235	1,270	35	2.8%
KSOM	871	891	898	831	841	10	1.2%
DAY	3,910	3,927	3,984	3,921	3,913	-8	-0.2%
CGCE UG*	171	205	170	179	156	-23	-12.8%
UNDERGRAD	4,081	4,132	4,154	4,100	4,069	-31	-0.8%
GRAD	810	751	719	740	766	26	3.5%
CGCE STO**	721	768	938	1,230	1,199	-31	-2.5%
TOTAL	5,612	5,651	5,811	6,070	6,034	-36	-0.6%

FALL CREDITS							
	<u>2007</u>	<u>2008</u>	<u>2009</u>	<u>2010</u>	<u>2011</u>	Difference from 10 to 11	
						Credits	Percent
CAS	29,104.5	29,297.5	29,638.0	29,588.5	28,508.0	-1,080.5	-3.7%
PCPS	19,766.0	19,230.5	20,221.0	19,987.5	20,597.5	610.0	3.1%
KSOM	14,001.5	14,385.5	14,521.0	13,324.5	13,630.5	306.0	2.3%
DAY	62,872.0	62,913.5	64,380.0	62,900.5	62,736.0	-164.5	-0.3%
CGCE UG*	1,100.5	1,181.0	1,189.0	1,160.5	1,049.0	-111.5	-9.6%
UNDERGRAD	63,972.5	64,094.5	65,569.0	64,061.0	63,785.0	-276.0	-0.4%
GRAD	5,931.5	5,734.0	5,540.5	6,578.0	6,803.5	225.5	3.4%
CGCE STO**	2,631.0	3,167.0	4,654.0	6,476.0	5,718.0	-758.0	-11.7%
TOTAL	72,535.0	72,995.5	75,763.5	77,115.0	76,306.5	-808.5	-1.0%

*CGCE UG represents students enrolled in the College of Graduate and Continuing Education in undergraduate level courses.

**CGCE STO (Special Terms Online) represents students enrolled in the University of Scranton's Online Initiatives.

First Time, First-Year Students for Fall 2011

	Full-time	Part-time	Male	Female	Total
CAS	523	2	269	256	525
PCPS	328	0	77	251	328
KSOM	196	0	150	46	196
DAY	1,047	2	496	553	1,049
CGCE UG	0	1	0	1	1
UNDERGRAD	1,047	3	496	554	1,050
<hr/>					
GRAD	250	35	102	183	285
CGCE STO*	84	112	81	115	196
TOTAL	1,381	150	679	852	1,531

A first-time undergraduate student is one who is attending any institution for the first time.

A first-time graduate student is one who has never attended The University of Scranton as a graduate student in the past.

New Undergraduate Transfer Students By Class for Fall 2011

	Freshman	Sophomore	Junior	Senior	Total
CAS	23	45	53	38	159
PCPS	12	19	8	20	59
KSOM	17	18	20	18	73
DAY	52	82	81	76	291
CGCE UG	7	11	13	16	47
UNDERGRAD	59	93	94	92	338

Average Semester Credits Attempted in Fall

	2007	2008	2009	2010	2011
CAS	15.9	15.8	16.1	16.0	15.8
PCPS	16.3	16.2	16.3	16.2	16.2
KSOM	16.1	16.1	16.2	16.0	16.2
DAY	16.1	16.0	16.2	16.0	16.0
CGCE UG	6.4	5.8	7.0	6.5	6.7
UNDERGRAD	15.7	15.5	15.8	15.6	15.7
<hr/>					
GRAD	7.3	7.6	7.7	8.9	8.9
CGCE STO*	3.6	4.1	5.0	5.3	4.8
TOTAL	12.9	12.9	13.0	12.7	12.6

** Refers to CGCE Special Terms Online (STO)*

Fall 2011 - Headcounts by School, Enrollment Status and Gender

	Full-Time			Part-Time			Total		
	Male	Female	Total	Male	Female	Total	Male	Female	Total
CAS	906	853	1,759	25	18	43	931	871	1,802
PCPS	252	1,004	1,256	3	11	14	255	1,015	1,270
KSOM	579	247	826	10	5	15	589	252	841
Day	1,737	2,104	3,841	38	34	72	1,775	2,138	3,913
CGCE UG	7	27	34	56	66	122	63	93	156
Undergrad	1,744	2,131	3,875	94	100	194	1,838	2,231	4,069
Grad	208	393	601	72	93	165	280	486	766
CGCE STO*	216	297	513	303	383	686	519	680	1,199
Total	2,168	2,821	4,989	469	576	1,045	2,637	3,397	6,034

Fall 2011 - Credits by School, Enrollment Status and Gender

	Full-Time			Part-Time			Total		
	Male	Female	Total	Male	Female	Total	Male	Female	Total
CAS	14,528.5	13,677.5	28,206.0	181.5	120.5	302.0	14,710.0	13,798.0	28,508.0
PCPS	4,106.5	16,402.0	20,508.5	24.0	65.0	89.0	4,130.5	16,467.0	20,597.5
KSOM	9,389.0	4,145.5	13,534.5	59.0	37.0	96.0	9,448.0	4,182.5	13,630.5
Day	28,024.0	34,225.0	62,249.0	264.5	222.5	487.0	28,288.5	34,447.5	62,736.0
CGCE UG	98.0	373.5	471.5	243.0	334.5	577.5	341.0	708.0	1,049.0
Undergrad	28,122.0	34,598.5	62,720.5	507.5	557.0	1,064.5	28,629.5	35,155.5	63,785.0
Grad	2,012.0	4,069.0	6,090.0	334.0	379.5	713.5	2,355.0	4,448.5	6,803.5
CGCE STO*	1,517.0	2,080.0	3,597.0	925.0	1,196.0	2,121.0	2,442.0	3,276.0	5,718.0
Total	31,660.0	40,747.5	72,407.5	1,768.5	2,132.5	3,901.0	33,428.5	42,880.0	76,306.5

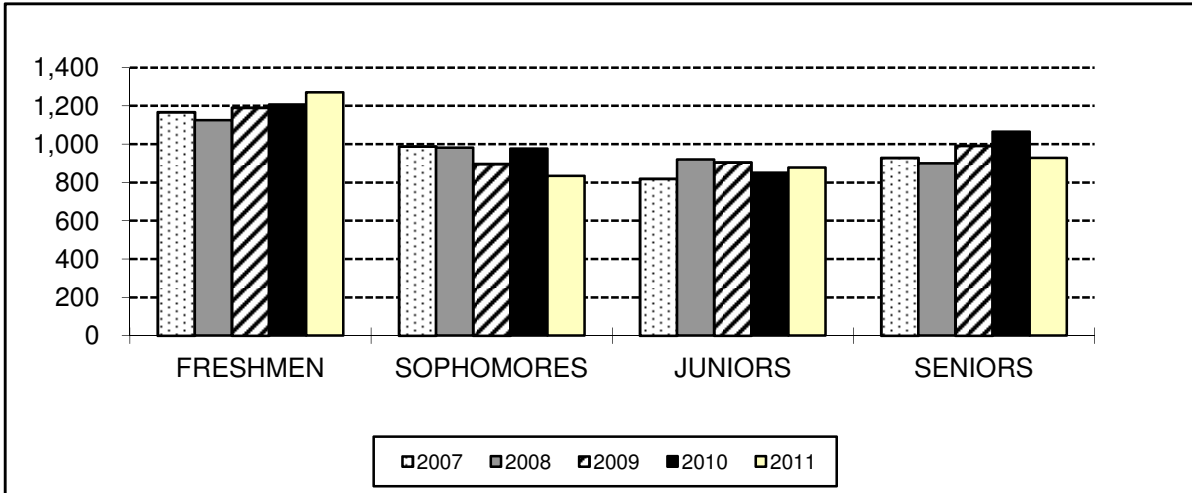
Fall 2011 - FTES by School and Gender

	Male	Female	Total
CAS	914.3	859.0	1773.3
PCPS	253.0	1007.7	1260.7
KSOM	582.3	248.7	1106.3
Day	1749.7	2115.3	3865.0
CGCE UG	25.7	49.0	74.7
Undergrad	1775.3	2164.3	3939.7
Grad	232.0	424.0	656.0
CGCE STO*	317.0	424.7	741.7
Total	2324.3	3013.0	5337.3

* Refers to CGCE Special Terms Online (STO)

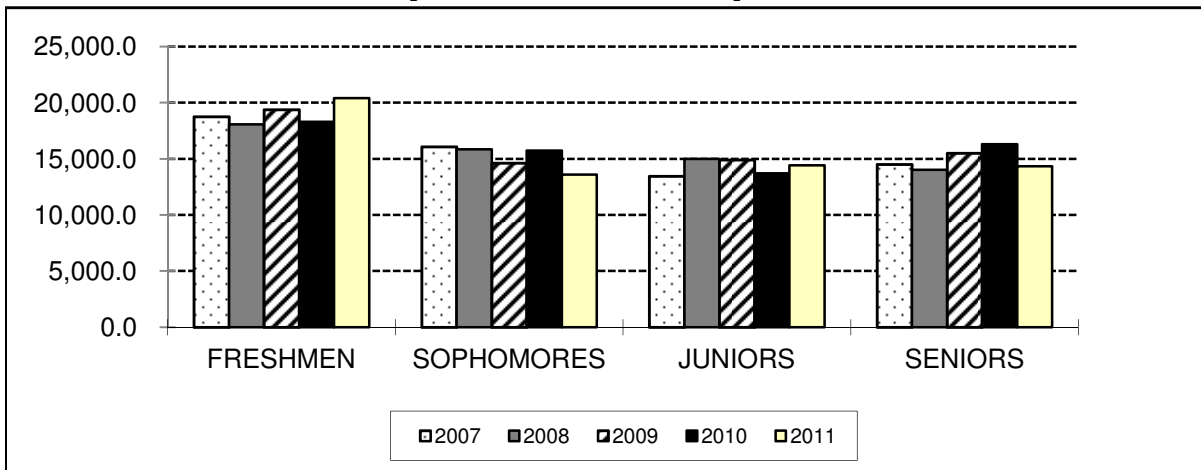
Full-time equivalent students (FTEs) is based on the following formula: FT headcount + 1/3 PT headcount.

Day School Headcounts by Class



	2007	2008	2009	2010	2011	Difference
						10 to 11
FRESHMEN	1,167	1,126	1,191	1,207	1,271	5.3%
SOPHOMOR	989	981	897	976	835	-14.4%
JUNIORS	819	920	905	851	878	3.2%
SENIORS	928	900	991	1,066	929	-12.9%

Day School Credits by Class



	2007	2008	2009	2010	2011	Difference
						10 to 11
FRESHMEN	18,737.0	18,077.0	19,373.0	18,303.0	20,406.5	11.5%
SOPHOMOR	16,078.5	15,848.5	14,609.0	15,726.5	13,595.0	-13.6%
JUNIORS	13,449.5	14,985.5	14,903.0	13,719.5	14,415.5	5.1%
SENIORS	14,511.0	14,008.5	15,495.0	16,312.0	14,319.0	-12.2%

Majors (1st) of Undergraduates Seeking Bachelor's Degrees

	<i>First-time Freshmen</i>					<i>All</i>				
	Fall 07	Fall 08	Fall 09	Fall 10	Fall 11	Fall 07	Fall 08	Fall 09	Fall 10	Fall 11
Accounting	28	30	35	42	23	197	194	218	138	207
Accounting Info Systems	0	0	0	0	0	1	1	1	0	0
Biochemistry	21	12	22	23	12	70	59	58	60	48
Biology	101	96	95	93	92	323	322	339	318	310
Biochemistry, Cell & Molecular Biology	6	11	10	11	10	7	21	35	41	41
Biomathematics	1	3	4	2	4	6	5	9	12	10
Biophysics	2	2	0	0	0	7	8	7	5	7
Business Administration	26	28	47	37	44	101	122	140	135	147
Chemistry	5	8	8	8	13	21	17	17	21	27
Chemistry/Business	1	0	1	3	1	11	8	6	9	8
Chemistry/Computers	1	0	0	2	0	1	1	0	2	1
Communication	30	39	36	27	42	218	232	229	204	187
Community Health Education	0	0	0	0	7	9	12	17	25	43
Computer Engineering	4	0	1	9	4	8	5	8	14	10
Computer Information Systems	6	2	1	3	2	16	14	14	20	15
Computer Science	8	5	16	6	13	25	24	29	23	35
Counseling & Human Services	5	3	8	19	7	119	108	117	126	142
Criminal Justice	14	14	27	31	29	125	129	130	137	141
Early Childhood Education	10	0	0	0	0	28	4	0	1	0
Early Childhood/Special Education	0	1	0	0	0	8	18	19	9	5
Early and Primary Teacher Education	0	0	49	35	38	0	0	50	93	120
Economics	2	2	7	5	11	18	21	28	29	38
Electrical Engineering	3	4	4	4	4	18	18	16	17	21
Electronic Commerce	0	0	0	1	1	6	6	10	6	5
Electronics Business	0	1	0	1	0	0	2	3	4	2
Elementary Education	52	0	0	0	0	166	54	3	2	0
Elementary/Early Childhood	0	29	0	0	0	6	44	32	22	11
Elementary/Special Education	0	19	0	0	0	54	120	125	78	24
English	9	15	8	8	11	107	93	74	70	71
Environmental Science	2	7	5	6	4	10	11	14	17	16
Exercise Science	58	41	49	69	78	186	189	217	241	250
Finance	14	16	16	11	16	117	139	119	105	111
Forensic Chemistry	4	6	9	5	6	5	12	24	17	18
French/Francophone Cultural Studies	0	0	1	0	0	0	0	3	2	1
Gerontology	1	0	0	0	0	1	0	0	0	0
Health Administration	4	2	6	3	8	29	37	36	42	41
Hispanic Studies	0	0	1	0	1	0	0	7	5	6
History	14	14	18	3	12	87	101	102	102	86
Human Resources Studies	1	0	3	1	0	32	22	28	18	23
International Business	9	11	11	5	14	47	52	48	42	44
Internat'l Lang. (French, Spanish)	2	1	2	2	3	18	18	15	17	6

Beginning in 2007, the Department of Education requires students to enroll in one of 3 new dual majors: Elementary/Early Childhood, Elementary/Special Education, or Early Childhood/Special Education. Elementary Education, Early Childhood Education and Special Education majors will be phased out.

Majors (1st) of Undergraduates Seeking Bachelor's Degrees (cont.)

	<i>First-time Freshmen</i>					<i>All</i>				
	Fall 07	Fall 08	Fall 09	Fall 10	Fall 11	Fall 07	Fall 08	Fall 09	Fall 10	Fall 11
International Studies	10	6	8	7	5	35	26	25	30	29
Liberal Studies	0	0	0	0	2	22	26	22	30	34
Management	10	2	7	11	9	78	64	64	61	67
Marketing	20	18	21	24	23	161	167	165	131	129
Mathematics	8	3	10	3	3	36	35	33	29	20
Media Information Tech.	2	2	1	4	2	11	13	12	18	16
Medical Technology	0	0	0	1	3	4	0	0	1	3
Middle Level Teacher Education	0	0	14	1	2	0	0	15	15	20
Modern & Classical Languages	1	3	1	1	11	10	9	2	1	2
Neuroscience	9	13	12	16	16	44	55	66	81	73
Nursing	53	67	55	65	63	256	270	267	284	278
Nursing R.N.	0	0	0	0	0	5	4	3	3	3
Occupational Therapy (Health Sciences)	29	30	45	36	57	131	138	158	155	185
Operations Management	1	1	0	0	0	9	7	8	4	7
Philosophy	2	1	1	1	2	27	22	20	27	28
Physics	3	2	2	3	3	13	13	9	18	12
Political Science	22	13	28	13	17	120	114	110	94	76
Pre-Engineering	1	0	0	0	0	2	1	0	1	1
Psychology	30	40	32	54	43	173	175	194	210	209
Secondary Education	37	40	37	22	31	123	121	115	99	93
Sociology	0	2	0	2	1	8	10	8	10	7
Special Education	7	0	0	0	0	25	11	0	1	0
Theatre	0	2	0	2	3	5	10	10	10	8
Theology/Religious Studies	1	3	3	1	3	5	15	11	14	13
Women's Studies	0	0	0	0	0	0	0	0	0	2
Business Common Curriculum	98	76	65	45	56	126	115	96	68	74
CAS Common Curriculum	180	174	137	138	158	184	176	142	141	167
CPS Area	59	45	50	28	37	65	65	70	56	55
Exploratory	0	0	0	0	0	31	38	58	35	28
Goal Attainment	0	0	0	0	0	46	44	17	25	31
Support for Success	0	0	0	0	0	2	0	3	0	0
Transition Program (CGCE)	0	2	0	0	0	13	12	8	4	5
TOTAL	1,027	967	1,029	953	1,050	3,978	3,999	4,062	3,987	3,959

Non-Degree Seeking Students

High School Scholar	0	0	0	0	0	41	56	37	37	41
Pre-Professional Program Req.	0	0	0	0	0	7	3	0	1	1
Major not Declared	0	0	0	0	0	39	60	45	57	58
TOTAL	0	0	0	0	0	87	119	82	99	100

GRAND TOTAL	1,027	967	1,029	953	1,050	4,065	4,118	4,144	4,086	4,059
--------------------	--------------	------------	--------------	------------	--------------	--------------	--------------	--------------	--------------	--------------

Second Majors of Undergraduate Students

	All				
	Fall 07	Fall 08	Fall 09	Fall 10	Fall 11
Accounting	3	1	2	4	1
Biochemistry	0	0	1	1	1
Biology	1	0	1	3	0
Biomathematics	1	0	2	2	2
Chemistry	0	0	0	1	0
Communication	8	5	8	5	3
Computer Information Systems	1	0	1	0	0
Computer Science	0	1	0	2	1
Criminal Justice	6	3	9	7	7
Economics	8	4	5	4	5
Electronic Commerce	0	1	2	1	0
Electronics Business	1	0	0	0	0
English	9	10	25	26	29
Environmental Science	0	0	1	1	0
Exercise Science	0	0	1	0	0
Finance	6	7	12	15	17
French/Francophone Cultural Studies	0	0	3	1	0
Hispanic Studies	0	0	23	24	15
History	53	41	53	60	53
Human Resources Studies	2	1	0	0	0
Human Services	1	1	2	2	0
International Business	0	1	0	0	1
International Studies	1	0	1	2	3
Management	0	3	4	2	7
Marketing	5	11	6	1	0
Mathematics	14	11	24	20	20
Media Information Tech.	1	1	0	0	1
Modern & Classical Languages	18	23	6	2	1
Neuroscience	3	7	8	3	1
Operations Management	0	0	1	3	2
Philosophy	74	56	57	60	59
Physics	0	1	1	1	0
Political Science	9	7	8	10	12
Psychology	10	5	7	4	5
Sociology	3	1	3	2	6
Theatre	1	5	3	3	2
Theology/Religious Studies	13	11	2	6	6
TOTAL	252	218	282	285	271

Majors of Associate's Degree Students					
	2007	2008	2009	2010	2011
Business	4	5	4	1	2
Computer Engineering	0	0	1	0	0
Computer Information	1	1	0	1	1
Counseling & human services	1	3	2	2	1
Geronotology	1	1	0	0	0
Health Administration	1	0	1	2	1
Liberal Arts	5	2	1	5	1
Liberal Studies	0	0	0	0	1
	13	12	9	11	7

Headcounts of Students Seeking Certificates					
	2007	2008	2009	2010	2011
<u>Undergraduate</u>					
Certificate	3	2	1	3	3
<u>Graduate - Masters Level</u>					
Cert of Adv Graduate Study	8	9	6	7	9
Certificate	0	0	0	0	9
Post-Masters Certificate	0	0	4	4	1

Majors (1st) of Master's Degree Students*											
	First-time Students					#	All				
	Fall 07	Fall 08	Fall 09	Fall 10	Fall 11		Fall 07	Fall 08	Fall 09	Fall 10	Fall 11
Adult Health Nursing	2	2	4	2	2		12	11	15	12	11
Biochemistry	7	18	12	16	9		23	33	33	30	30
Chemistry	5	3	5	3	4		7	11	13	11	11
Clinical Chemistry	6	6	3	4	8		9	10	7	11	19
Community Counseling	18	17	20	15	20		48	56	53	56	55
Curriculum & Instruction	125	103	56	35	27		305	344	349	332	232
Early Childhood Education	1	1	1	0	0		2	3	1	3	1
Educational Administration	131	74	61	42	47		427	378	378	402	321
Education - Certification	0	3	1	0	0		7	15	31	49	54
Elementary Education	3	1	4	1	0		13	10	8	8	5
English as Second Language	3	0	0	2	0		6	4	2	6	2
Health Administration	29	20	23	28	23		48	52	49	54	62
History	5	6	0	0	0		18	19	13	8	4
Human Resources Administration	20	15	14	32	33		42	40	32	82	133
MBA: Accounting	4	2	8	9	14		14	8	16	30	27
MBA: Enterprise Resources Planni	0	0	0	0	3		0	0	0	0	18
MBA: Finance	8	6	11	9	10		25	20	26	37	33
MBA: General	7	23	28	36	39		31	52	111	196	194
MBA: Health Care Mgt.	0	6	20	21	26		0	11	52	96	120
MBA: International Business	0	1	1	1	3		4	5	5	5	8
MBA: Marketing	4	3	5	2	9		7	9	9	13	22
MBA: Operations Management	4	1	1	7	14		10	9	5	43	76
MBA: Management Info Systems	1	1	3	1	4		8	3	5	10	13
Nursing, inc Family Nurse Prac.	5	2	10	11	12		14	15	17	29	36
Nurse Anesthesia	6	12	12	6	8		39	36	43	32	29
Occupational Therapy	29	0	36	2	32		34	29	42	43	34
Physical Therapy	19	0	0	0	0		19	0	0	0	0
Physical Therapy- DPT	39	15	47	9	61		92	102	119	136	164
Reading Education	7	1	4	4	9		16	10	11	12	12
Rehabilitation Counseling	9	16	14	9	13		54	46	44	41	44
School Counseling	20	12	18	15	21		82	59	58	51	54
Secondary Education	13	10	11	8	12		22	28	26	29	28
Software Engineering	6	5	7	8	6		17	18	19	20	21
Special Education	15	3	6	4	0		20	10	9	14	13
Superintendent Ltr of Eligibility	0	0	0	0	0		8	8	1	14	14
Theology	9	4	3	2	4		19	17	16	12	14
Undeclared	0	0	0	0	6		21	32	29	32	32
TOTAL	560	392	449	344	479	#	1,523	1,570	1,647	1,959	1,946

*Enrollment figures include the CGCE STO programs.