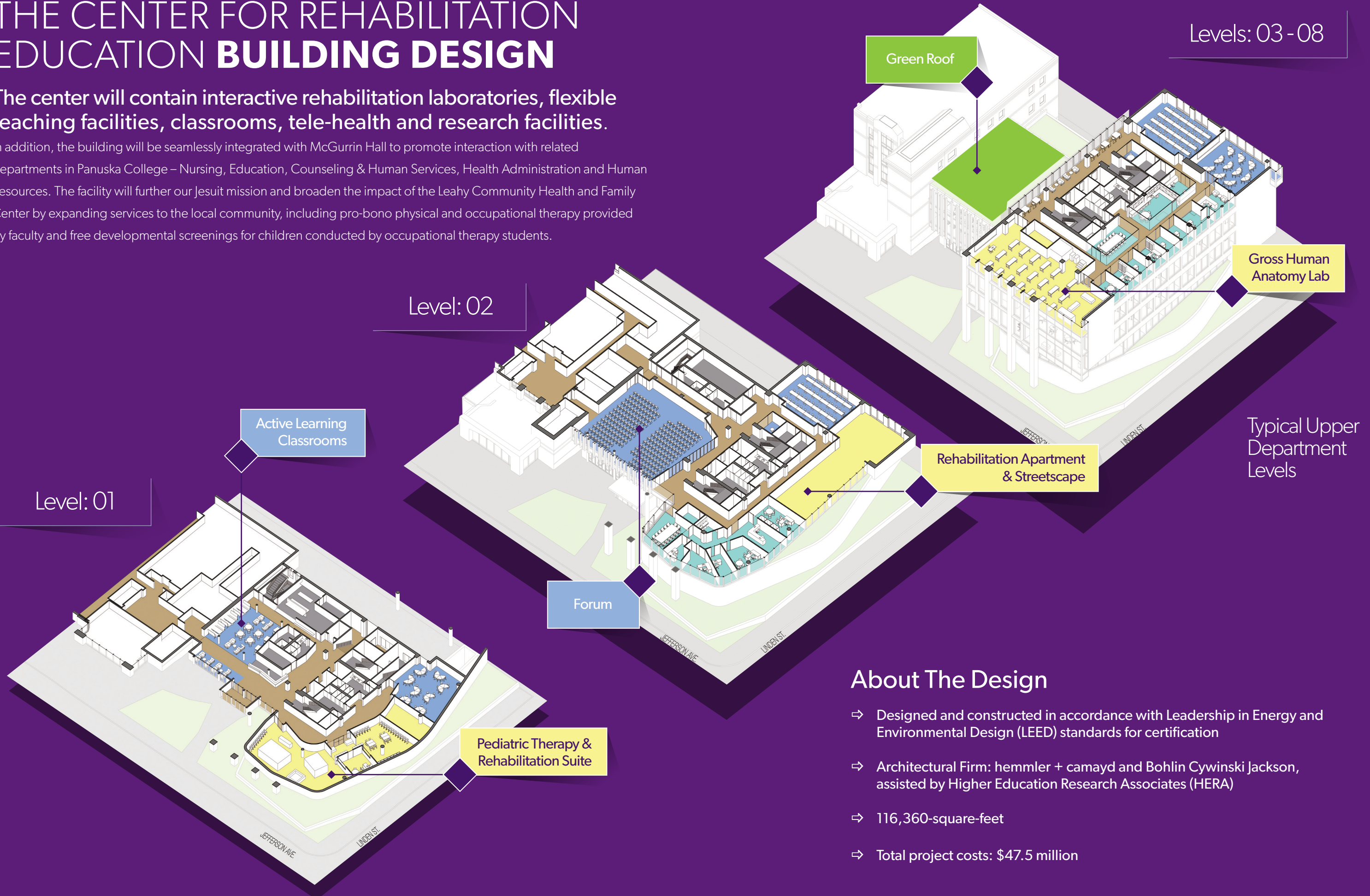


THE CENTER FOR REHABILITATION EDUCATION **BUILDING DESIGN**

The center will contain interactive rehabilitation laboratories, flexible teaching facilities, classrooms, tele-health and research facilities.

In addition, the building will be seamlessly integrated with McGurkin Hall to promote interaction with related departments in Panuska College – Nursing, Education, Counseling & Human Services, Health Administration and Human Resources. The facility will further our Jesuit mission and broaden the impact of the Leahy Community Health and Family Center by expanding services to the local community, including pro-bono physical and occupational therapy provided by faculty and free developmental screenings for children conducted by occupational therapy students.



Level: 01

Active Learning Classrooms

Level: 02

Forum

Pediatric Therapy & Rehabilitation Suite

Green Roof

Levels: 03 - 08

Gross Human Anatomy Lab

Rehabilitation Apartment & Streetscape

Typical Upper Department Levels

About The Design

- ⇒ Designed and constructed in accordance with Leadership in Energy and Environmental Design (LEED) standards for certification
- ⇒ Architectural Firm: hemmler + camayd and Bohlin Cywinski Jackson, assisted by Higher Education Research Associates (HERA)
- ⇒ 116,360-square-feet
- ⇒ Total project costs: \$47.5 million